

Improvement District No. 2254

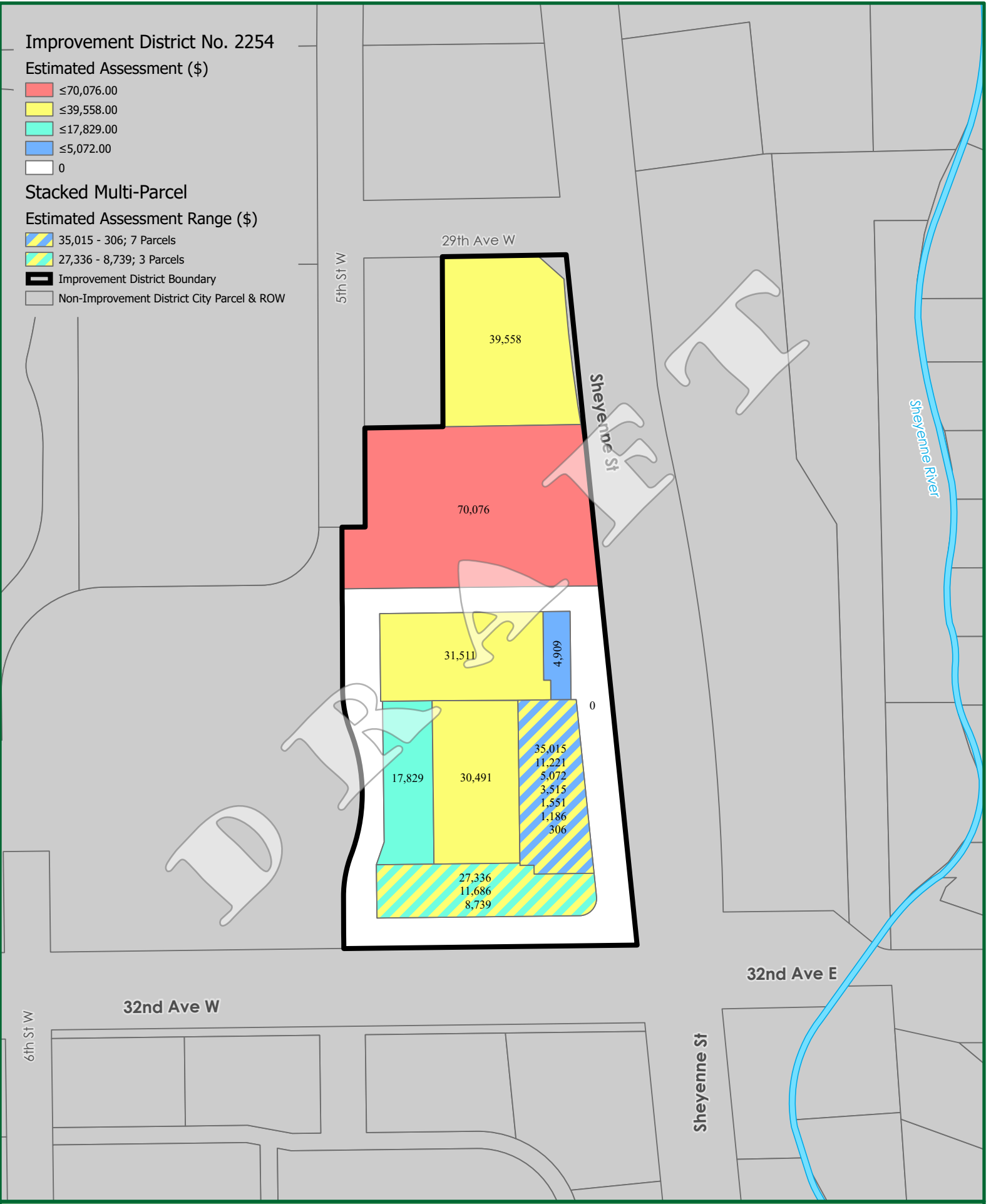
Estimated Assessment (\$)

- ≤70,076.00
- ≤39,558.00
- ≤17,829.00
- ≤5,072.00
- 0

Stacked Multi-Parcel

Estimated Assessment Range (\$)

- 35,015 - 306; 7 Parcels
- 27,336 - 8,739; 3 Parcels
- Improvement District Boundary
- Non-Improvement District City Parcel & ROW



Improvement District No. 2254 - DRAFT Assessment Allocation Map

Prepared by West Fargo Engineering and GIS on 6/4/2021

Disclaimer: This map was created using preliminary data and is only intended as a visual-aid for general (NOT exact) reviewing purposes.

